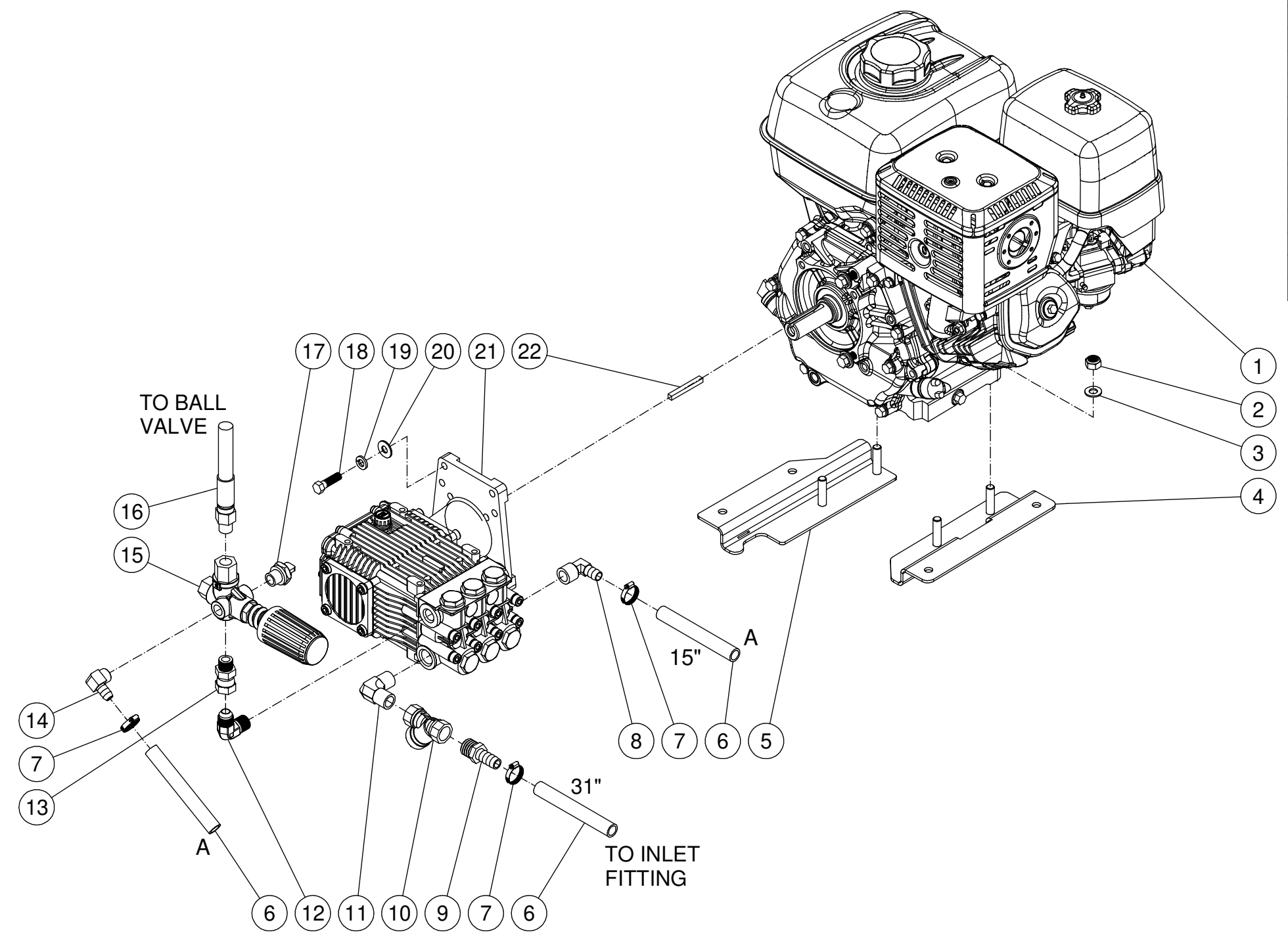


ITEM	PART #	DESCRIPTION	R/Q	QTY
1	1-0086	ENGINE - HONDA 390cc 13 HP RECOIL GX390		1
2	30-3159	HEX NYLON LOCKNUT-ZINC M10-1.5		4
3	28-0004	WASHER - ZI SAE 3/8"		4
4	20-1388A77	MOTOR Z PLATE - RIGHT		1
5	20-1387A77	MOTOR Z PLATE - LEFT		1
6	15-0007	HOSE 1/2 250psi	3.833'	1
7	42-0011	SS WORM CLAMP 3/8"-1"		3
8	23-0418	ELBOW 90°- 1/2" MNPT x 1/2" BARB		1
9	23-0045	BARB 1/2M X 1/2 HOSE		1
10	23-0514	1/2NPT Y FILTER - BRASS		1
11	23-0386	ELBOW - 1/2 MNPT 90 DEG BRASS		1
12	24-0092	ELBOW-3/8M X #8JIC M 90° STEEL		1
13	24-0037	3/8 MNPT X #8 FJIC SWIVEL		1
14	23-0050	ELBOW 3/8M X 1/2" HOSE BARB-BRASS		1
15	8-0633	UNLOADER- PULSAR W/CAP		1
16	15-0197	HOSE - 3/8 ID X 3/8 M SWIVEL X 3/8M X 28"		1
17	22-0114	VALVE HEAT DUMP 3/8"		1
18	27-0118	BOLT - HHCS - ZI GR5 3/8-16 x 1 1/4		4
19	29-0008	LOCKWASHER - ZI MED 3/8		4
20	28-0022	WASHER - ZI STANDARD 5/16"		4
21	3-0310	PUMP-DD GAS 4000 PSI @ 3.5		1
22	43-0078	KEY - 1/4" SQ x 2 1/8"	X	1



Mi-T-M Corporation

SCALE: NTS DATE: 2/19/19 DRAWING SIZE: B APPD: DRAWN BY: JVA

DPW-4000-0AHU PUMP/ENG ASSY

DRAWING/PART NO: DPW-4000-0AHU PUMP/ENG ASSY

M:\Drawings\PRIVATE LABEL\MAKINEX\DPW-4000\DPW-4000-0AHU PUMP_ENG ASSY.iam